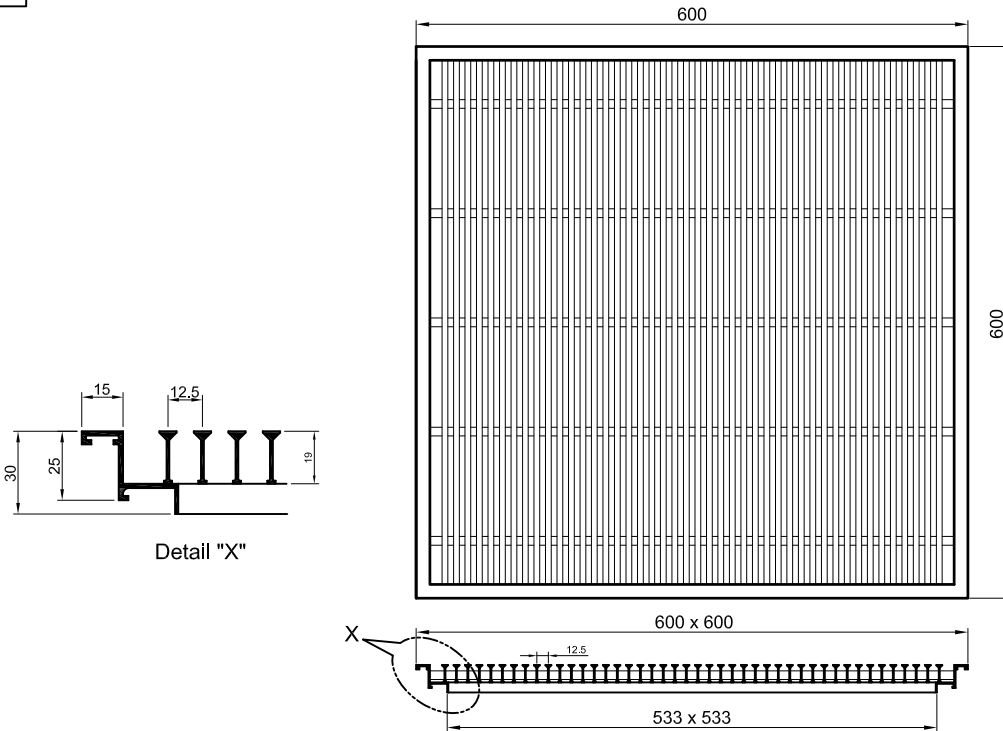
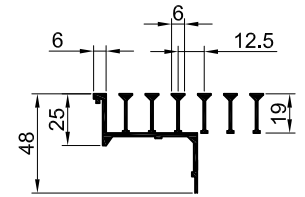


001 One way

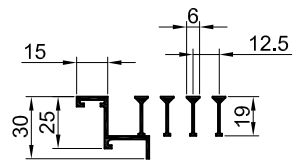


1. Frame Options

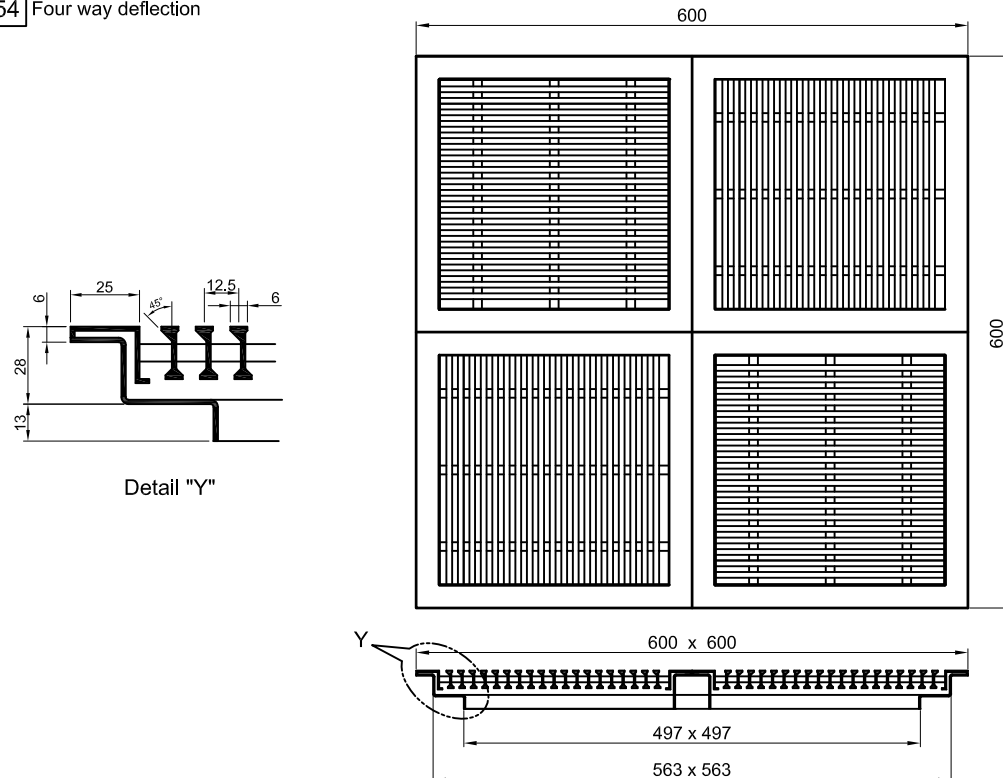
006 With attached damper



001 With attached damper

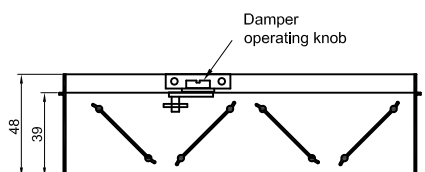


154 Four way deflection



2. Accessory

D With attached damper



Description.

- Heavy duty floor grilles are constructed from aluminum alloy extrusions.
- Tested for 2.3 tone breaking load.
- Finish: Powder coated finish RAL - 9016
- Standard coating thickness - 55 microns.

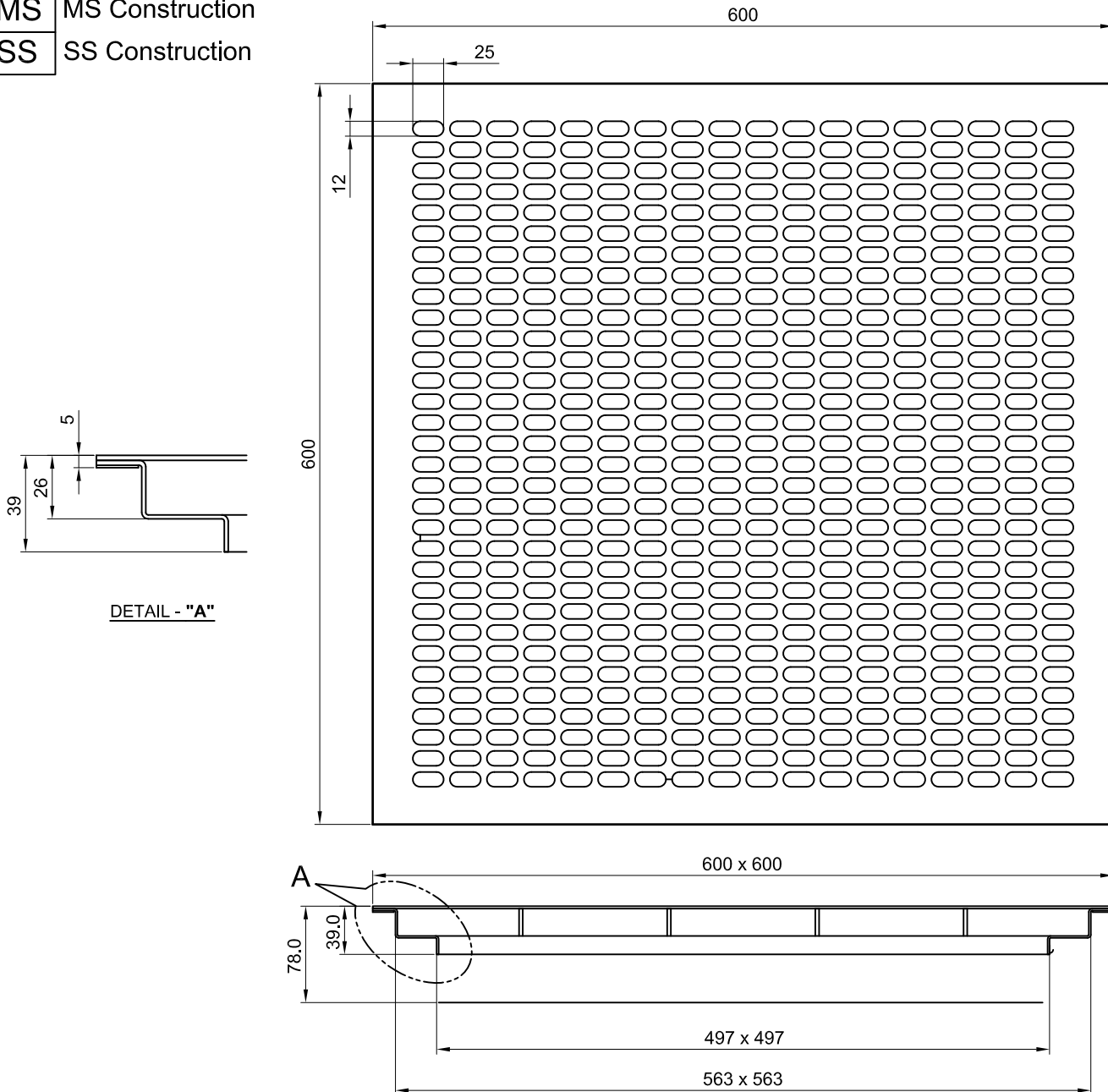
Model : FL- -
 1 2

Note:

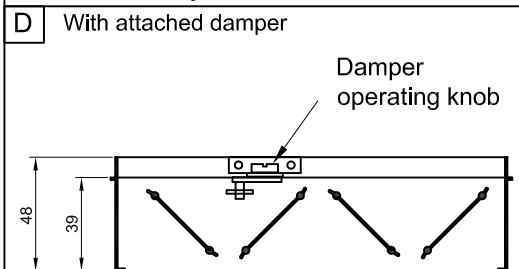
- This submittal is mean to demonstrate general dimension of the product. The drawing on submittal are not mean to detail every aspect of product with exactness. Drawing are not to scale. COSMOS reserve to the right to make changes without written notice.
- All Dimensions are in mm.
- Dimensions are ± 1.5mm

1. Construction

MS	MS Construction
SS	SS Construction



2. Accessory



Model : FL-PF- -

Note:

- This submittal is mean to demonstrate general dimension of the product. The drawing on submittal are not mean to detail every aspect of product with exactness. Drawing are not to scale. COSMOS reserve to the right to make changes without written notice.
- All Dimensions are in mm.
- Dimensions are ± 1.5 mm