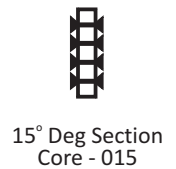
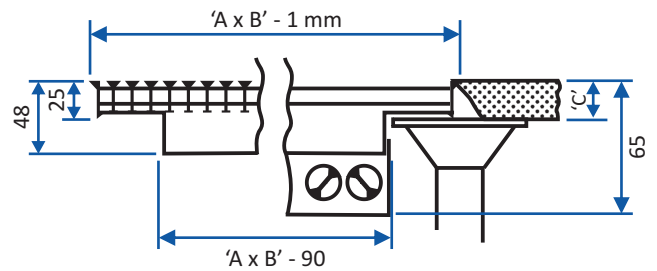
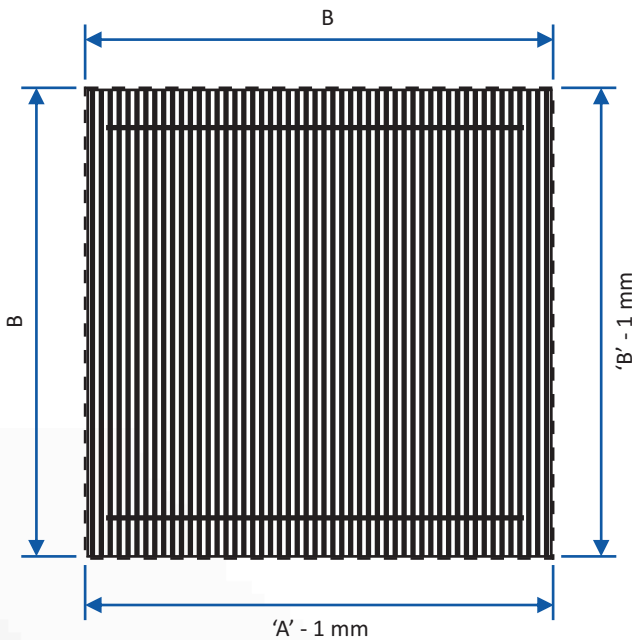
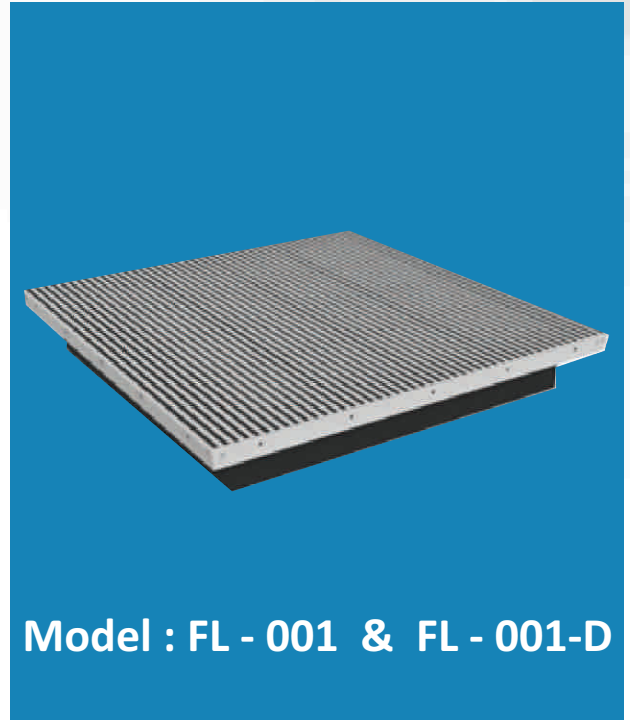


Floor Grill Description

For supply or extract air, having single set of fixed blades available in deflection bar. Designed to replace 600 x 600 floor tiles and Extra Heavy Duty requirements.

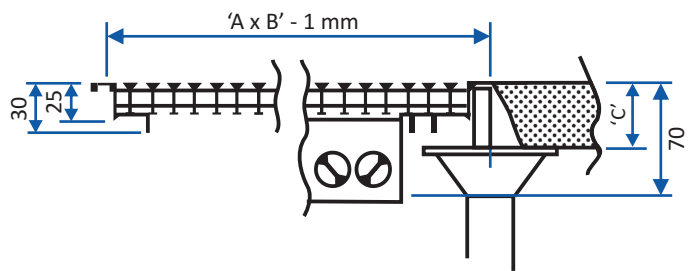
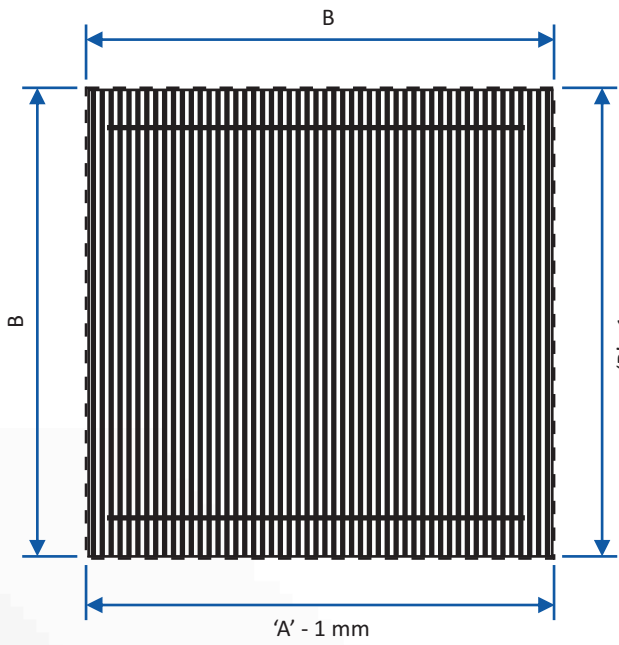
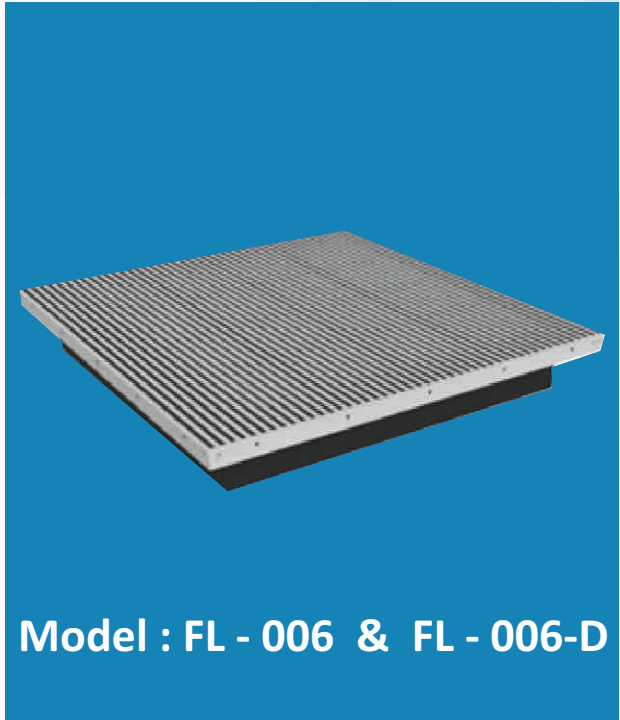
Floor Grill Construction

From extruded aluminium sections, frame 1.6 mm thick blades are 1.0 and 1.5 mm thick. The frame is supply with extra rear re-inforcement mullions to achieve the Extra Heavy Duty rating.



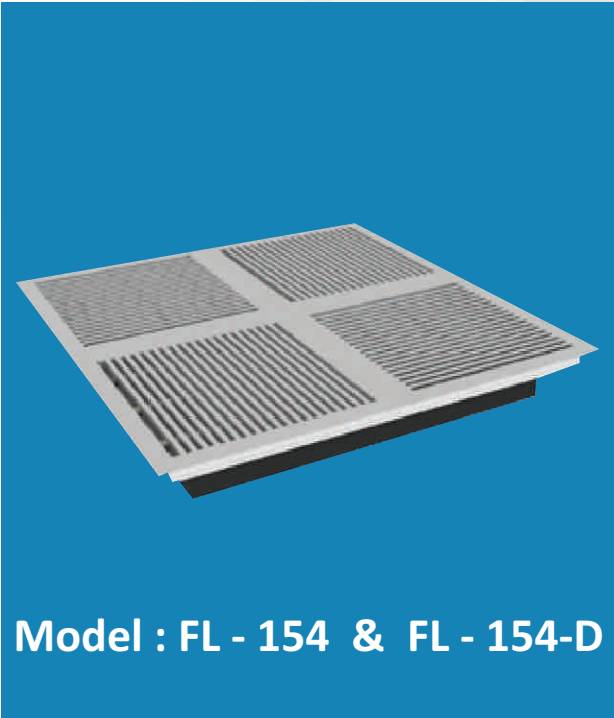
Performance Table

VOLUME (CFM)	TOTAL PRESSURE (In H2O)	FREE AREA VELOCITY (V _k) (Fpm)	THROW (Ft.)	NOISE LEVEL (NR)
450	0.02	300	7	23
700	0.04	470	11	29
950	0.07	630	14	35
1150	0.1	780	16	40
1400	0.13	925	19	45

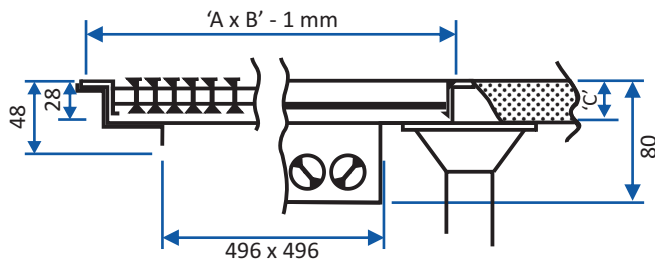
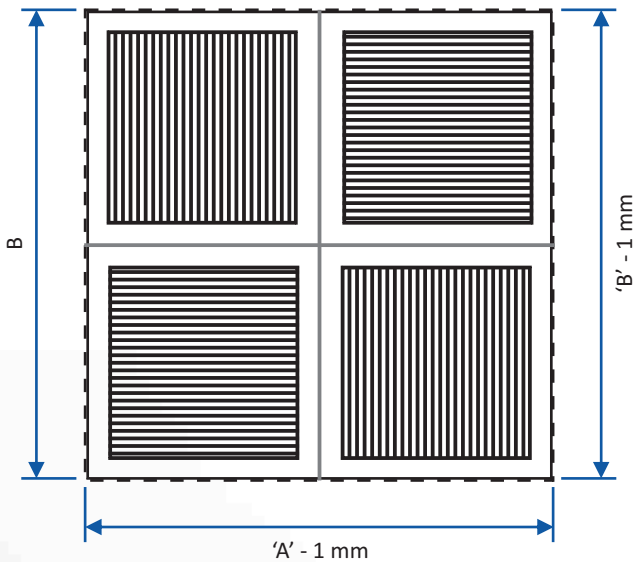


Technical Data

AIR FLOW RATE (CFM)	400	500	600	700	800	900	1000	1100
VELOCITY (YK)	275	350	415	485	550	620	690	760
THROW (FT)	7	9	10	11.5	13	14	15	16
STATIC PRESSURE (Ps)	0.005	0.009	0.012	0.014	0.019	0.024	0.029	0.033
FINAL BREAKING LOAD	2300 KGS.							



Model : FL - 154 & FL - 154-D



Technical Data

AIR FLOW RATE (CFM)	300	400	500	600	700	800
VELOCITY (YK)	275	370	460	555	650	740
THROW (FT)	7	9.5	11.5	13	14.5	16
STATIC PRESSURE (Ps)	2	3	4	5	7	10
FINAL BREAKING LOAD	2320 KGS.					