

SQUARE SWIRL DIFFUSER

COSMOS make Square Swirl Diffuser is mainly used for air supply for air conditioning and ventilators it is also known as Multi Direction Outlet. For its special multi direction design, it can provide multi-angle airflow, which can create a more comfortable environment.

Square swirl diffuser SSW series high capacity modular core directional diffuser supply large volumes of air at low sound levels and pressure drops.

The aluminum modular core diffuser design enables a quick and easy reconfiguration of air discharge pattern by repositioning of the individual cores.

Operation

The curved shape of the louver vanes is designed to enhance the diffuser performance for different applications.

For the distribution of cool air, the louver panels are set to deflect air horizontally across the ceiling.



For high ceilings air distribution, the louver panels are inverted to achieve a 40° downward air throw.

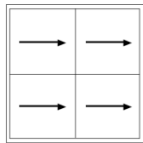


For spot cooling, the louver panels oppose each other for a vertical down air throw

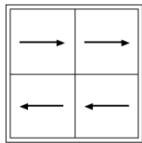


Air Flow Patterns

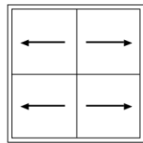
The SSW four louver panels are simply positioned to direct air flow where required.



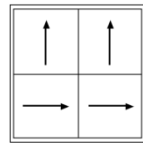
1 WAY



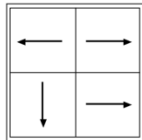
2 WAY



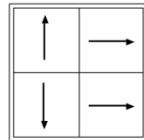
2 WAY



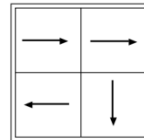
2 WAY



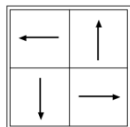
3 WAY



3 WAY



3 WAY



4 WAY

Features

Extruded aluminum construction.

Four louver air pattern modules can be repositioned in the field simply and quickly without tools.

Air flow pattern can be adjusted to 1way, 2way, 3way or 4-directional throw.

Balance between aesthetic appearance and performance.

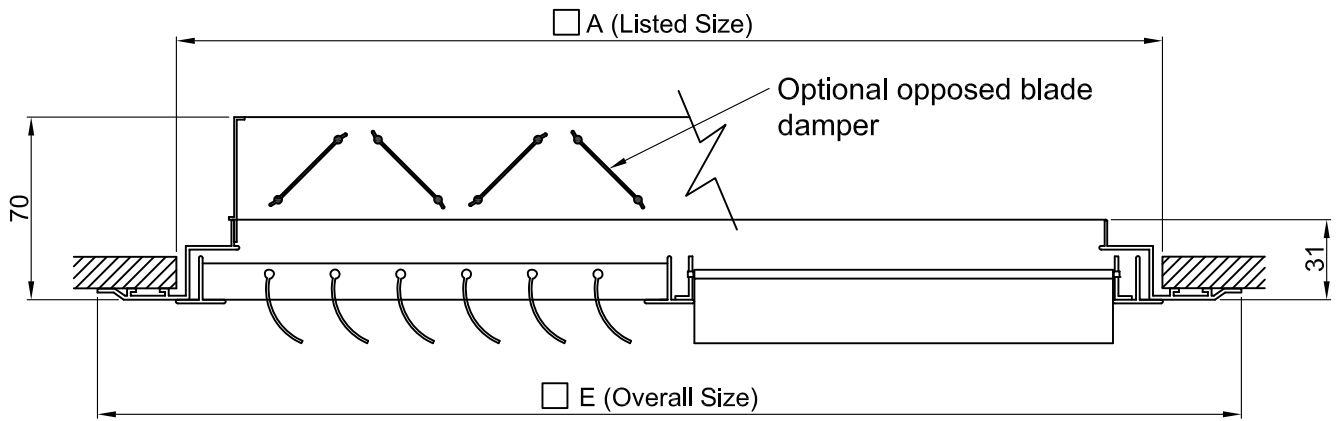
Adjustable for 4 way blow in wide selection of sizes.

Removable air pattern modules can be removed for access to optional VCD opposed blade damper.

Finish

Powder coated RAL 9016

SQUARE SWIRL DIFFUSER



Size	E	A
300	360	300
350	410	350
400	460	400
450	510	450
500	560	500
550	610	550
600	660	600

Performance Data:

Model: SSW

Listed Size (mm) Neck area (ft2)	Effective area (ft2)	Neck velocity, FPM	200	300	400	500	600	700
		Total Press, Inch wc	0.02	0.045	0.08	0.125	0.18	0.245
300 X 300 (0.96)	0.622	Air flow, CFM	190	290	385	480	575	670
		Noise, NC (dB)	<20	20	28	35	40	45
		Throw, T (Ft)	1 - 4	2 - 7	4 - 11	6 - 17	8 - 23	9 - 26
350 X 350 (1.3)	0.845	Air flow, CFM	260	390	520	650	780	910
		Noise, NC (dB)	<20	21	29	36	41	46
		Throw, T (Ft)	1 - 4	3 - 9	5 - 15	8 - 23	10 - 29	11 - 33
400 X 400 (1.7)	0.966	Air flow, CFM	340	510	680	850	1020	1190
		Noise, NC (dB)	<20	22	30	37	42	46
		Throw, T (Ft)	1 - 5	3 - 9	5 - 15	8 - 24	11 - 32	13 - 35
450 X 450 (2.17)	1.400	Air flow, CFM	435	650	870	1085	1300	1520
		Noise, NC (dB)	<20	23	31	37	43	47
		Throw, T (Ft)	1 - 6	3 - 10	5 - 16	9 - 27	12 - 35	13 - 39
500 X 500 (2.67)	1.728	Air flow, CFM	535	800	1070	1335	1600	1870
		Noise, NC (dB)	<20	24	32	38	44	48
		Throw, T (Ft)	1 - 7	3 - 11	5 - 17	9 - 28	12 - 37	13 - 41
600 X 600 (3.87)	2.554	Air flow, CFM	774	1160	1550	1935	2320	2710
		Noise, NC (dB)	21	25	33	38	45	50
		Throw, T (Ft)	1 - 8	3 - 12	5 - 17	9 - 29	12 - 38	13 - 43