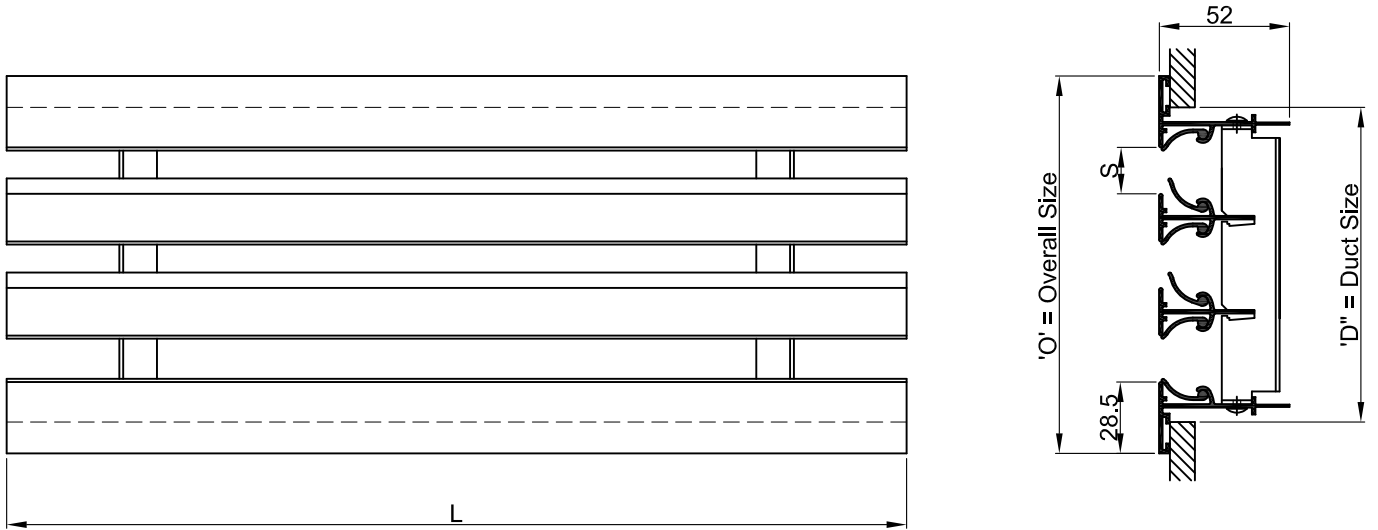


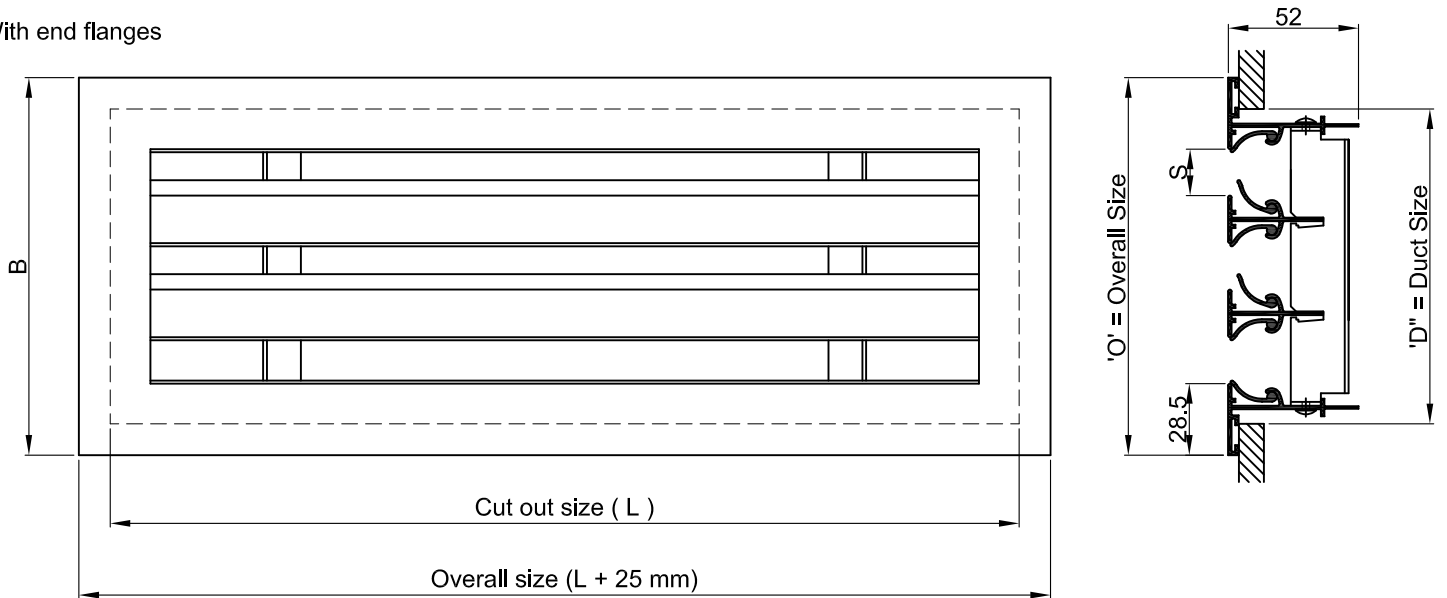
Dimensional data

SLOT DIFFUSER

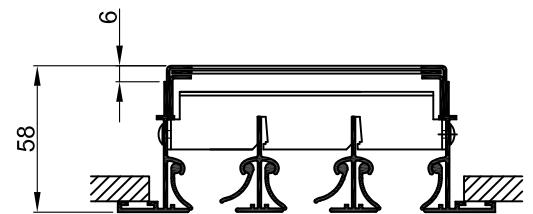
Without end flanges (Continuous type.)



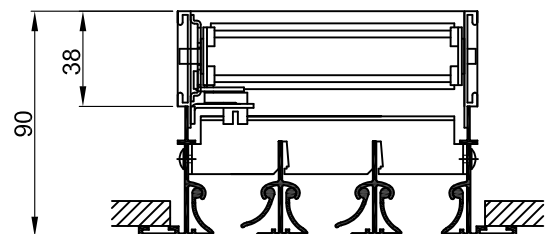
With end flanges



Accessory:



With heat and miss damper



With opposed blade damper

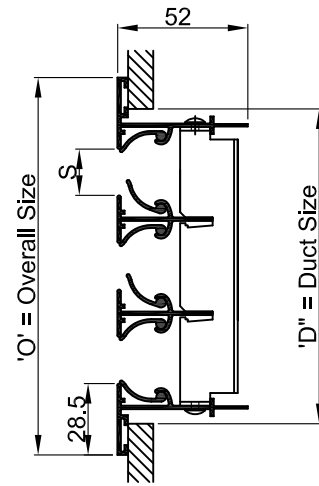
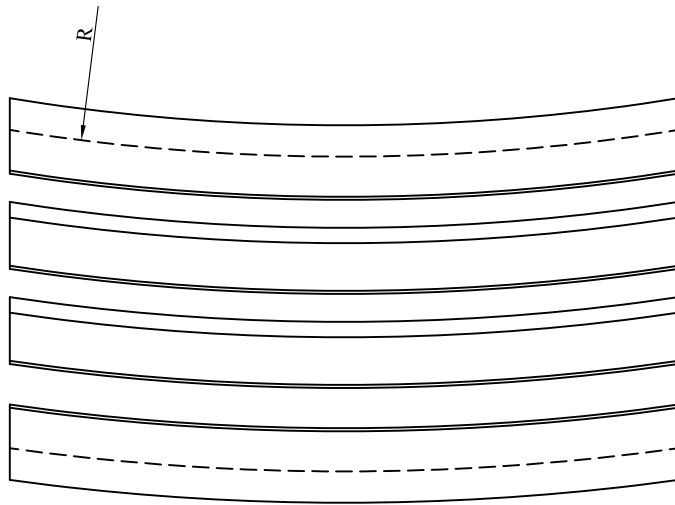
All dimensions are in mm

| NUMBER OF SLOT | S = 12.5 mm | | S = 19 mm | | S = 25 mm | |
|----------------|-------------|-----|-----------|-----|-----------|-----|
| | D | O | D | O | D | O |
| 1 | 45 | 70 | 51 | 76 | 57 | 82 |
| 2 | 76 | 101 | 88 | 113 | 101 | 126 |
| 3 | 108 | 133 | 126 | 151 | 145 | 170 |
| 4 | 139 | 164 | 163 | 188 | 189 | 214 |
| 5 | 171 | 196 | 201 | 226 | 233 | 258 |
| 6 | 202 | 227 | 238 | 263 | 277 | 302 |
| 7 | 234 | 259 | 276 | 301 | 321 | 346 |
| 8 | 265 | 290 | 313 | 338 | 365 | 390 |

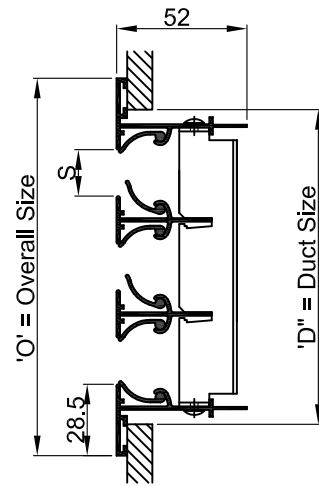
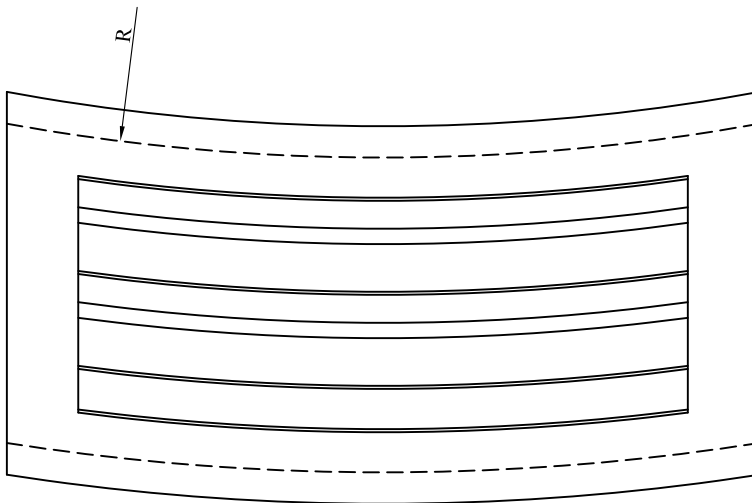
Dimensional data

CURVED SLOT DIFFUSER

Suitable for curve ceiling installation without end flange.



Suitable for curve ceiling installation with end flange.



All dimensions are in mm

| NUMBER OF SLOT | S = 12.5 mm | | S = 19 mm | | S = 25 mm | |
|----------------|-------------|-----|-----------|-----|-----------|-----|
| | D | O | D | O | D | O |
| 1 | 45 | 70 | 51 | 76 | 57 | 82 |
| 2 | 76 | 101 | 88 | 113 | 101 | 126 |
| 3 | 108 | 133 | 126 | 151 | 145 | 170 |
| 4 | 139 | 164 | 163 | 188 | 189 | 214 |
| 5 | 171 | 196 | 201 | 226 | 233 | 258 |
| 6 | 202 | 227 | 238 | 263 | 277 | 302 |
| 7 | 234 | 259 | 276 | 301 | 321 | 346 |
| 8 | 265 | 290 | 313 | 338 | 365 | 390 |